

**2004** GULFSTREAM G200 | N65ER | SN 100



**2004** GULFSTREAM G200 | N65ER | SN 100

262.763.6600 MeisnerAircraft.com

# 2004 GULFSTREAM G200 | N65ER | SN 100

FANS 1A / CPDLC | 2020 PAINT | ATG-4000 WIFI | 16C INSPECTION C/W JULY 2020



## AIRFRAME

**AIRFRAME HOURS:** 9,100

**AIRFRAME LANDINGS:** 5,378

**ENGINES:** ENROLLED ON ESP GOLD LITE (\$343.75/ENG)  
P&W PW306A (6,040 LBS THRUST)

**E1:** SN PCE-CC0282 | 8,048 HOURS TOTAL TIME |  
4,762 TOTAL CYCLES

**E2:** SN PCE-CC0266 | 8,295 HOURS TOTAL TIME |  
4,841 TOTAL CYCLES

**APU:** ENROLLED ON MSP GOLD (\$146.65)  
HONEYWELL GTCP 36-150(IAI)

- SN: P-209
- 5,775 Hours Total Time

## AVIONICS: DUAL COLLINS FCC-300 IFCS / PRO LINE 4 AVIONICS PACKAGE

- Dual Collins AHS-3000 AHRS
- Dual Collins FCC-4005 Autopilot
- Dual Collins VHF-4000 w/8.33 kHz Comms
- Universal CVR-120 CVR
- Dual Collins DME-4000 DME
- Collins 5-Tube Pro Line 4 EFIS
- Gulfstream 2021 WAAS/LPV
- Dual Collins GPS-4000 GPS
- Dual Honeywell KHF-950W HF
- Collins NAVS
- Collins ALT-4000 Radar Altimeter
- AirCell ST-3400 SATCOM
- Honeywell EGPWS TAWS
- Collins TCAS-4000 w/change 7.1 TCAS
- Dual Collins TDR-94D Transponders
- Collins TWR-850 Color Weather Radar
- ATG-4000 WiFi System
- FANS 1A / CPDLC / WAAS-LPV NEXT GEN

## SUBSCRIPTIONS / PROGRAMS

- CMP Maintenance Tracking
- Engines on Pratt & Whitney ESP GOLD LITE
- APU on Honeywell MSP GOLD

[CLICK HERE TO VIEW FULL LISTING](#)



# 2004 GULFSTREAM G200 | N65ER | SN 100

FANS 1A / CPDLC | 2020 PAINT | ATG-4000 WIFI | 16C INSPECTION C/W JULY 2020



## EXTERIOR: NEW 2020 BY CAPITAL AVIATION

Overall White with Silver and Platinum accent striping.

## INTERIOR: REFURBISHED BY WEST STAR AVIATION 2020

### 9-Passenger Configuration

Stand-up cabin. Earthtone leather upholstery, forward 4-place club, aft 3- place berthable divan opposite 2-place club. New neutral color fabric lower sidewalls. Rich high-gloss wood veneer cabinetry, stowable executive writing & dining tables at each seating group. Wheat carpeting. Airshow 4000 passenger information & moving map display, DVD & CD players, aft 15-inch LCD video and multiple plug-in monitors. Aft externally serviceable lav.

Forward full-service galley, microwave, coffeemaker, cooled storage compartment, ice drawer, extensive storage areas for ice, wine, china, crystal, catering trays, food beverages & many custom features.

Gold-plated hardware, sand Ultraleather window panels, private aft lavatory w/solid privacy door, vanity w/storage, custom lighting, mirror, sink & airline-style flushing toilet, 110-volt outlet system w/multiple outlets for laptops & cell phone

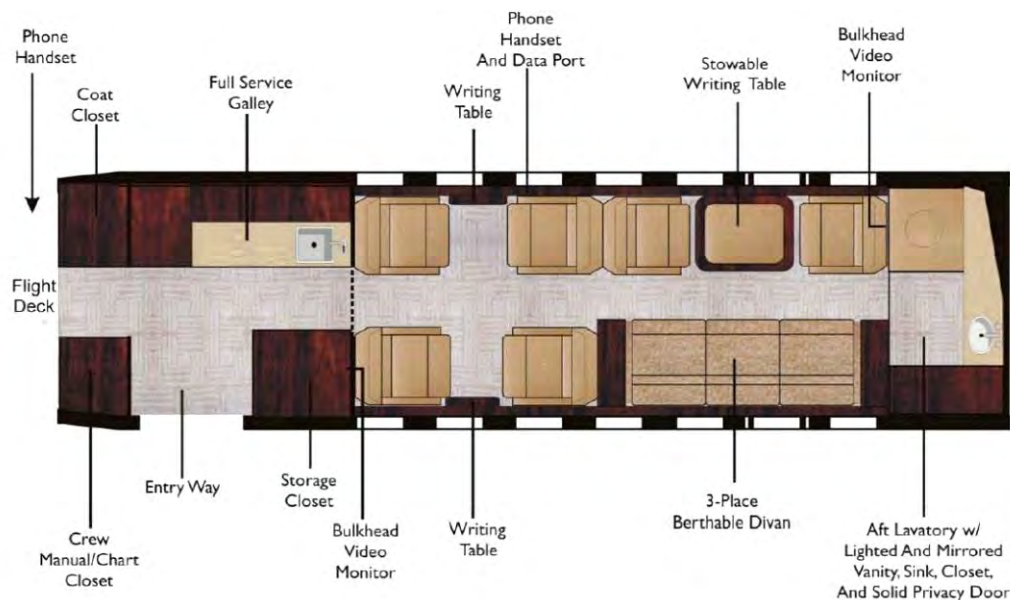
chargers, solid cabin privacy doors, pleated window shades. Enhanced soundproofing package, tail camera.

Large external baggage compartment w/exterior steps. Forward storage closets, lavatory storage closet.

[CLICK HERE TO VIEW FULL LISTING](#)

**MEISNERAIRCRAFT**

JET SALES & ACQUISITION













































**Meisner Aircraft's Aviation Legacy began in 1922** when Edward C. Meisner started working for National Air Transport; a company that in 1931 would become known as United Air Lines, Inc. A Wisconsin-based firm consistently ranked in the top 5 inventorying dealers in the world for transactions, the Meisner family is now enjoying its 4th generation of aviation professionals. Well-respected since its 1979 inception, Meisner Aircraft is known for its ability to internally facilitate trade-in deals for its customers and fellow dealers worldwide.

